



Fourth Year Course Information Session

School of Behavioural Science >



Fourth Year Course Information Session

School of Behavioural Science >



The Program

School of Behavioural Science >



- A transitional year on the way to becoming an independent practitioner and/or researcher
- More like a postgraduate degree than undergraduate
- 1-to-1 work with academic staff – you join your supervisor's research team for the year.
- Semi-autonomous research project
- Advanced coursework & small elective seminars



Program components 1.

School of Behavioural Science >



Research project

- 50% of assessment
- Choice of supervisors based on a ranking system
 - Accepted students rank 10 potential supervisors based on projects or topics publicised in advance
 - Students are assigned a subset of their ranked supervisors, and negotiate a project early in the year
 - The full range of psychology subject areas is covered
- Thesis of 10,000 words, due toward end of Semester 2



Illustrative projects

School of Behavioural Science >



- Adolescents' problem-solving strategies
- Strategies for learning musical notation.
- Validity of a mobile case-management program for people at risk for first episode psychosis.
- Predictors of cognitive symptoms after mild traumatic brain injury.
- Selective attention in ADHD
- Self-structure and borderline personality disorder
- The role of visual memory in spelling ability
- The experience of seizures after epileptic surgery
- Personality correlates of myopia
- Dehumanisation of refugees



Program components 2.

School of Behavioural Science >



Compulsory subjects

- Two compulsory subjects (12.5% each) in Semester 1
- Advanced design & data analysis
 - Introduction to multivariate statistics
- Theories & ethics in psychology
 - Advanced review of the historical, philosophical and theoretical context of contemporary psychology



Program components 3.

School of Behavioural Science >



Elective subjects

- Two elective subjects (12.5% each) in Semester 2
 - Current topics in developmental psychology
 - Current topics in social psychology
 - Current topics in cognitive psychology
 - Current topics in behavioural neuroscience
- Focus on recent research; smaller group discussion



Selection 1.

School of Behavioural Science >



Intake

- ~ 70 places, subject to supervisor availability
- Significant number of places taken up by "external" applicants

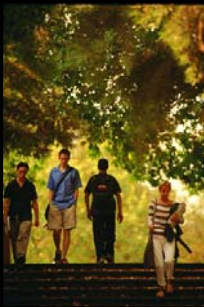
Prerequisites

- APS accredited 3 year psychology sequence
- Completed undergraduate degree



Selection 2.

School of Behavioural Science >



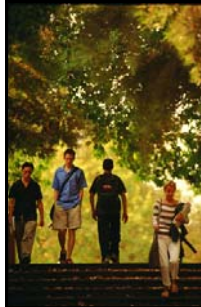
Criteria

- Academic performance only (recently in the H2A range)
- Based on an index of marks weighted by credit point value
- 2nd year level psychology subjects (weighted 1/3)
- All 3rd year level subjects (not just psychology)
- If applicant has done a combined degree, some judgement is shown in inclusion of non-psychology 3rd year subjects



Honours vs. PostGradDip

School of Behavioural Science >

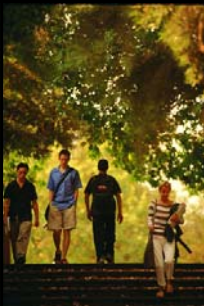


- No difference in selection process or standards
- No separate streams or quotas
- Both programs are APS accredited
- Both are equivalent for progress to higher degrees
- This equivalence is unlike most other Ψ departments in Victoria
- Apply for PGDip if you have completed a Graduate Diploma, your BA is > 5 years old or your Bachelors degree is in something other than Arts or Science



Other information

School of Behavioural Science >

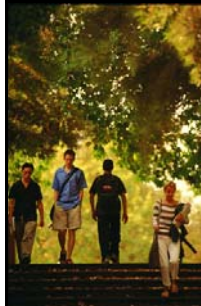


- No deferred places
- No mid-year entry
- Part-time study is possible but not encouraged
- All local places are HECS-based
- Most courses scheduled during daytime hours



Applications

School of Behavioural Science >

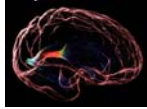


- Local applications are made via the U of M on-line application system (SIS), accessible via university homepage
<http://sis.unimelb.edu.au/cgi-bin/course-application.pl>
- International applications via International Centre
<http://www.futurestudents.unimelb.edu.au/int/ug/ugapply.html>
- Applications must also be printed and lodged with the enrolling faculty as indicated on form
- Online applications will be 'live' as of early September and close on 30 October, 2009
- Notification of acceptance is usually about mid-December.
- Possibility of 2nd round of offers



Why Melbourne Uni?

School of Behavioural Science >

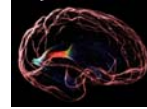


- Unparalleled range and quality of research supervision
- Rich associations with external research sites, for example
 - affiliated Hospitals
 - National Ageing Research Institute
 - Orygen Youth Health
 - Centre for Eye Research etc.
- Contemporary issues in coursework
- Strong preparation for further education in research and practice



Common concerns

School of Behavioural Science >



- Is it overly "traditional"?
 - It is traditional in its emphasis on rigorous academic and scientific training
 - It is innovative in its coursework and research offerings
- Why is there no applied component?
 - The course focus is primarily academic
 - It is a full and challenging year already
 - The course is a strong preparation for applied postgraduate courses
 - Most students aspire to higher degrees



Timeline

School of Behavioural Science >

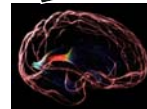


- | | |
|---------------|-------------------------------|
| October 30 | applications close |
| mid-December | offers made |
| mid-January | arrange supervision |
| [February | 2 nd round offers] |
| | (not offered every year) |
| late February | Orientation session |
| early March | coursework begins |



Other universities

School of Behavioural Science >



- There are 4th year programs at all Victorian universities
- It is wise to apply for >1 program
- Selection criteria differ somewhat
- PGDip vs. honours in many universities is an important difference
- Most Unis show some preference for their own graduates (esp. for honours)
- Doing 4th year at a university may provide an advantage in applying for its postgraduate programs



APS Info session

School of Behavioural Science >

Central Hall, ACU, City Campus
20 Young Street, (off Victoria Pde)

September 12, 2.30pm – 5.00pm
Short presentations from APS & local 4th year programs
Information booths for each university
No bookings necessary



Good luck!

School of Behavioural Science >

For more information visit our web site at:

www.psych.unimelb.edu.au

Or contact:

Department of Psychology
A/Prof Stephen Bowden
E: sbowden@unimelb.edu.au

Or Mariana Delgado
E: mdelgado@unimelb.edu.au